

IFSA 2016 Workshop 1.10 'Practical experiences and methodological concepts from the first years of EIP-AGRI implementation'



First Experiences in Implementation and Evaluation of the EIP Approach in Germany

Harper Adams University, Newport

July 15th 2016

Dr. Ulrich Gehrlein



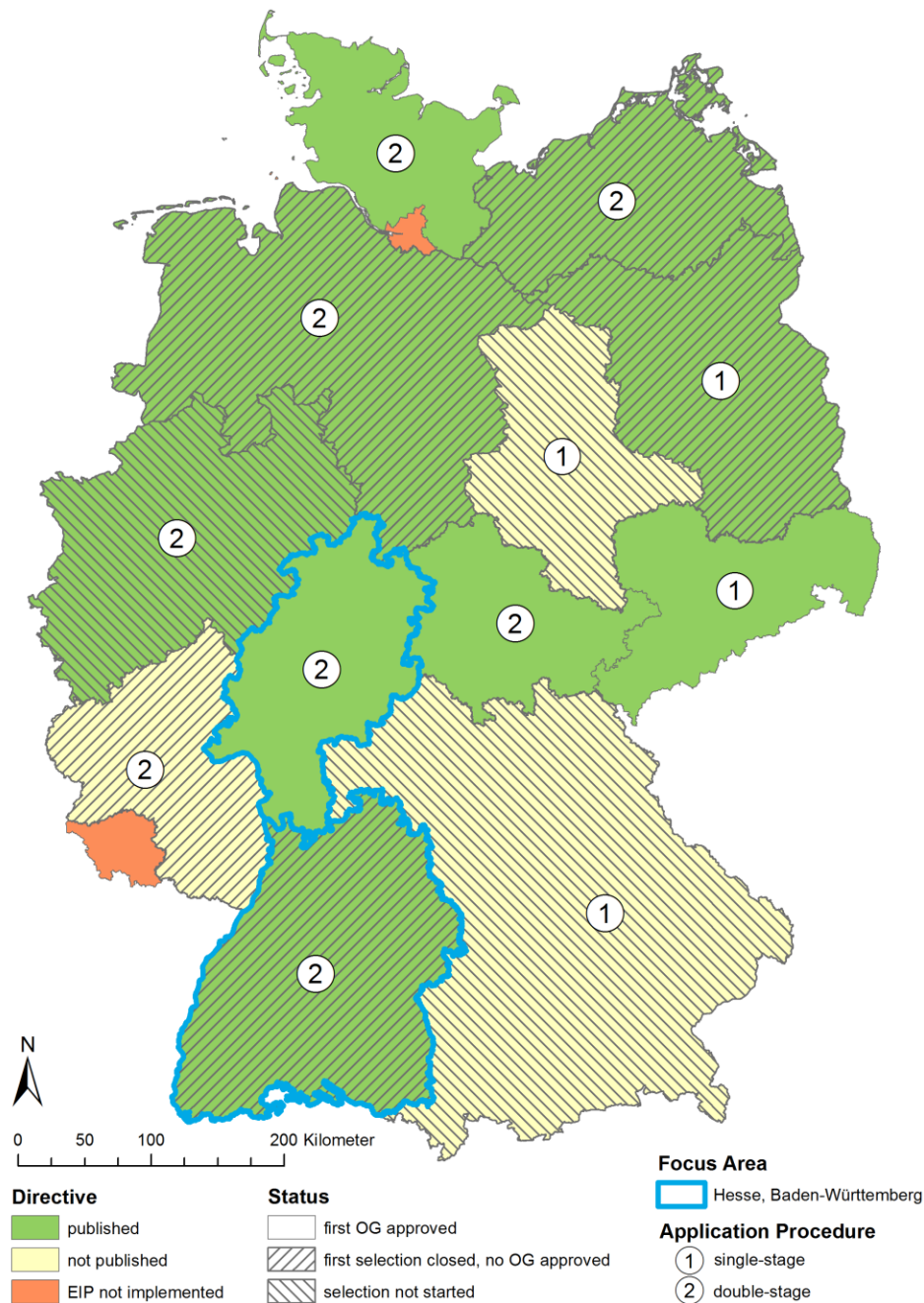
Institut für Ländliche Strukturforschung
an der Johann Wolfgang Goethe-Universität Frankfurt am Main

Agenda

1. **Status quo of EIP-AGRI implementation in Germany**
2. **EIP-AGRI in the federal state of Hesse**
 - Innovation Support Service: our task
 - First Operational Groups
3. **Evaluation approach of EIP-AGRI in Baden-Württemberg**
 - General Considerations
 - Objects, methods and instruments of investigation
4. **Conclusions and Outlook**

1. Status quo of EIP-AGRI implementation in Germany

- 13 rural development programmes (RDP) funded through the European Agricultural Fund for Rural Development (EAFRD)
- EIP-AGRI is programmed in 12 federal states
- The status quo of the implementation differs in the following points:
 - Publishing of the Directive
 - Funding Conditions
 - Application Procedure (single- or double-stage)
 - Status of the selection process of operational groups (OG)



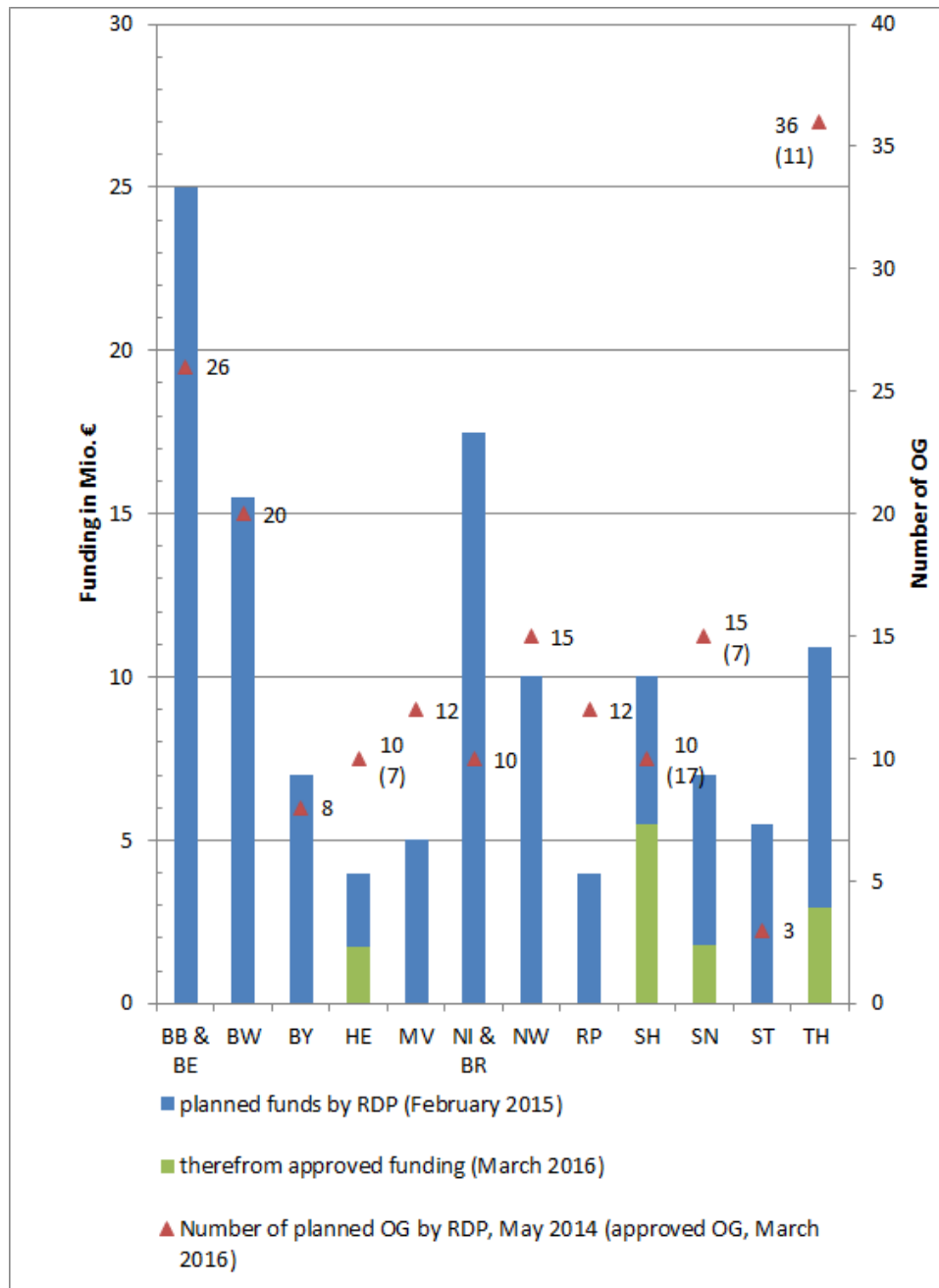


Figure: Financial allocation for EIP-AGRI in Germany – planning and actual status quo
Sources: Rocha (2015), LfULG (2016), own request 2016

(Abbreviations: BB & BE = Brandenburg & Berlin, BW = Baden-Württemberg, BY = Bavaria, HE = Hesse, MV = Mecklenburg Western Pomerania, NI & BR = Lower Saxony & Bremen, NW = Northrhine-Westphalia, RP = Rhineland-Palatinate, SH = Schleswig-Holstein, SN = Saxony, ST = Saxony-Anhalt, TH = Thuringia)

2. EIP-AGRI in the federal state of Hesse Innovation Support Service: Our task

- Support of the managing authority for the RDP-Hesse in implementing M 16: EIP-AGRI and cooperation measures (16.1, 16.4, 16.5 and 16.7)
- Input for information and publicity in Hesse (leaflets, homepage etc.)
- Networking between EIP-Operation Groups (OG) cooperation and further activities of M 16 within Hesse (and Germany)
- Support of OGs and cooperation activities during the application and realisation phase
 - First contact point for interested stakeholders
 - Connecting the several actors

2. EIP-AGRI in the federal state of Hesse

First selected Operational Groups (OG)

- With the first call, since January 2016 Hesse funds seven Operational Groups with nearly two million Euros
- thematic scope in Hesse: from boosting regional feedstuff, sustainable utilisation of 'senior laying hens', a sustainable productivity in the wheat sector and horticulture to the control of plant diseases.
- Most of the Operational Groups develop process innovations
- Most groups are expected to reach the innovation degree of an improvement
- Some address specific problems and solutions relevant for a small geographic scope
- Most Operational Groups address questions which are relevant beyond the Hessian borders

3. Evaluation approach of EIP-AGRI in Baden-Württemberg

- EC evaluation framework
 - main question: to which extent innovation, cooperation and building the knowledge base in rural areas were supported by the funding programme
 - To answer this question the implementation of the funding programme, the selection of projects and their results and effects have to be examined
 - A range of evaluation methods with quantitative and qualitative approaches is needed
- General Considerations about the funded innovations
 - Degree of novelty (routine, improvement or basic innovation)
 - Range of change (radical or incremental)
 - Degree of transdisciplinary
 - Capability of shortening or accelerating innovation cycles

3. Evaluation approach: Implementation

- RDP MEPL III and funding guidelines:
 - objects of support, funding conditions and handling procedures for Operational Groups and overall objectives for funded innovation projects
- Research methods:
 - document analysis of the RDP and the guidelines
 - Survey of managing authority, granting and paying agents
 - Survey of beneficiaries
- Questions:
 - Are the funded projects capable to cope with the problems and identified needs in the RDP?
 - Do the stated rules of action allow the Operational Groups to act in accordance with their needs?

3. Evaluation approach: Selection of innovative approaches

- Selection process and selection criteria for OGs and projects
 - Will the 'right' projects be funded?
 - Are periodical calls planed during the funding period?
- Research methods:
 - analysis of the selection criteria and a comparison of the selection process with the EIP objectives
 - document analysis of funding data, project lists and in particular the action plans
 - Individual aspects can be investigated in greater depth in the context of case studies
- Questions/Criteria:
 - the innovative nature and type of innovation of the funded projects
 - the composition of Operational Groups
 - the potential contribution of the project to the EIP objectives

3. Evaluation approach: Results and Impacts

- Assessment of the effectiveness:
 - Up to what extent progress towards sustainability has been achieved?
 - Could the competitiveness of farms be increased?
- Research methods:
 - document analyses of interim and final reports
 - self-assessment / -evaluation of the OGs about their activities and performance
 - case studies
- Questions:
 - How useful are the achieved results (products, processes, technologies)?
 - How successful was the commercial launch and the dissemination of the results?

4. Conclusions and Outlook

- The different status quo of the implementation of EIP-AGRI in Germany is a big challenge and also a possibility of learning from each other
- Challenge: the integration of the need of the compliance with regulations, questions on failure rate, financial sanctions etc. with the thought of innovation and cooperation
 - All actors need to become acquainted with this new flexible and creative approach
- Open question how far the funded projects fulfil the expectations:
 - At what level of innovation are the projects located?
 - What kind of innovation can be expected?
 - What effects in building regional or national innovation clusters will be achieved?

Thank you very much for your attention



Bildquelle: © highwaystarz - Fotolia.com



Bildquelle: © goodluz - Fotolia.com

Dr. Ulrich Gehrlein



IfLS – Institute for Rural Development Research

Kurfürstenstraße 49

D - 60486 Frankfurt / Main (Germany)

Phone +49 69 97 266 83 – 17

E-mail eip-hessen@ifls.de

www.ifls.de/eip.html

2. EIP-AGRI in the federal state of Hesse

First selected Operational Groups (OG)

- ‘Aromatic Mint’: cultivating and improving the quality of mint varieties with special aromas and additives in Hesse
- ‘Value-added Chain of Domestic Soya in Hesse’: to eliminate deficits along the value-added chain ‘from the harvest to the feeding trough’
- ‘Organic Hen’: developing innovative product lines for the meat of organically raised laying hens when their laying period is over
- ‘Establishment of a More Sustainable and Environment-friendly Wheat Value-Added Chain’: reduce soil fertilisation by nitrogen
- ‘Development of Professional Practice and Optimization of the Logistics Chain’: measures against the fungus *Rhizoctonia Solani* in potato cultivation
- ‘yellow wilt’ on lamb’s lettuce: try to identify the reason for the disease’s occurrence or to find scientific solutions
- ‘Innovation in Decision-making Support for Irrigation of Outdoor Vegetables’

1. Introduction

- Institute for Rural Development Research (IfLS) -

- In business for 60 years as an independent research and consultancy institute at Goethe University in Frankfurt/Main and carried by a non-profit association
- Addressing agricultural policy issues as well as the development of agriculture and rural regions in Germany and Europe
- Consultancy on different levels (federal states, regions, stakeholders)
- Working on several EU-Projects in the field of strengthening innovations in rural areas and the agriculture (IN-SIGHT, RETHINK, PEGASUS)
- On-going Evaluation of the rural development programmes in the federal state Baden-Württemberg and Rhineland-Palatine including M 16 (EIP-AGRI)
- Support of the managing authority for the RDP-Hesse in implementing M 16: EIP-AGRI and cooperation measures (16.1, 16.4, 16.5 and 16.7)