

get started



**Eberswalde University
for Sustainable
Development**

Institutions
and Services

1

Finance

2

Student
Commitments

3

Eberswalde
and Surroundings

4

Event Dates
and Guide

5

Welcome to the Eberswalde University for Sustainable Development

Dear first-semester students,

A very warm welcome to all new students at the Eberswalde University for Sustainable Development (HNEE). I am delighted that you have chosen the HNEE – a university which draws on over 190 years of history and continues to impress with its unique profile. At the heart of the teaching, research, transfer and organisation at the university is the development of practical and effective solutions for the challenges arising at the society-nature interface. This enables us to bring transformation processes into line with sustainable development. Students, academics, and staff at HNEE work together to shape the university as a living laboratory and learning space for sustainability. This commitment was impressively recognised in 2023 with the award as an “Outstanding Learning Venue for Education for Sustainable Development” by the German Federal Ministry of Education and Research (BMBF) and the German Commission for UNESCO. Likewise, the university was named a winner of the 2024 German Sustainability Award in recognition of its comprehensive sustainability profile.

The short decision-making processes and informal atmosphere at the HNEE are distinctive, and the guiding principles of open-mindedness and tolerance are firmly rooted in our mission statement. Both of our campuses and the Forest Botanical Garden are set against a beautiful natural backdrop. Furthermore, the city of Eberswalde plays host to a wide range of cultural activities and the surrounding landscape is characterised by unforgettable lakes and forests. Enrolment marks the start of a new chapter in your life and a new personal challenge. After your

studies, you will be ready to develop solutions to the challenge of our future and give new impetus to sustainable development. We are here to support you in this task with a high-quality, solution-oriented and practical academic education.

To help you find your feet, this overview provides guidance for your first weeks at the HNEE so you can settle in as quickly and smoothly as possible. Whether it's a question of student finance, housing or volunteering and social engagement, it offers useful suggestions, tips and contacts. I also strongly recommend you attend the student introduction events to gain some first insights and impressions. In addition, the Student Service, the International Office, the Career Service and other university institutions are always on hand with advice and assistance.

I wish you a smooth start and all the best for your studies.

Your President,
Prof. Dr. Matthias Barth

1

OUR SERVICE
SUSTAINABILITY MANAGEMENT
FAMILY RESPONSIBILITIES AND EQUAL RIGHTS
AT THE UNIVERSITY
LIBRARIES

PROJECT WORKSHOPS
SPORTS ACTIVITIES
SUSTAINABLE MOBILITY
LEARNING PLATFORMS
EMMA AND MOODLE

CAREER SERVICE & ALUMNI
NETWORK
START-UP CENTRE
CITY AND FOREST CAMPUS
FOREST BOTANICAL
GARDEN

INSTITUTIONS AND SERVICES



Our Service

Student Service Centre & Exchange Office

It is the first contact point for concerns for students. Any questions concerning studies including enrolment, re-registration, support by the Welcome Team, examination matters, stays abroad, multiple stresses e.g. because of family responsibilities, as well as study financing can be asked here.

The team will answer the questions or refer you to the appropriate counselling services.

Student Secretariat & Examination Office

You can ask here if, for example, you have problems with the validation of your green card (student ID and semester ticket), need a current certificate of achievement or would like to make an appointment for student counselling. For re-registration: Please note that you must always re-register for the next semester by paying the semester fee before the start of the examination period.

Important note: Please always read the emails from studieren@hnee.de.

Student Secretariat & Examination Office
studieren@hnee.de | Phone: +49 3334 657-134

Counselling Services for Students

Here you find an overview of all counselling services for students at our university or at partners of our university. Please feel free to make use of these services.

→ hnee.de/en/counselling

Welcome Team

In order to make your arrival at Eberswalde as smooth as possible, and to help you cope with applications, translations, forms and bureaucracy, the Welcome Centre at Eberswalde University has initiated a Buddy Programme which is free of charge. German and English-speaking students at Eberswalde University are available to support you as Buddies. They can accompany you to offices and help overcome other bureaucratic hurdles. He or she can show you around the area (campus, city, halls of residence ...) and help you integrate into student life. The Welcome Team offers an excellent opportunity to learn more about German culture and German traditions. It organises a number of welcome events for international students. If you would like to stay informed about our current events, please sign up to our Facebook group »International Students HNEE«.

Welcome Team
welcome@hnee.de | → hnee.de/en/welcome-team
Facebook: hnee.de/welcome

Centre for International Affairs

The Centre for International Affairs (CIA) promotes global networking and supports international cooperation in teaching, research and university life at HNEE. Together with various partners on campus, it helps bring international perspectives into everyday academic life and fosters a welcoming culture for students and staff from around the world.

The Exchange Office is responsible for inquiries regarding study abroad opportunities and scholarship programmes for international exchanges.

Centre for International Affairs
international-affairs@hnee.de | Phone: +49 3334 657-148
→ hnee.de/en/international-university
Exchange Office
exchange-hnee.de | Phone: +49 3334 657-138

Welcome Money

To help you get started in your new life as a student, the city of Eberswalde offers a welcome gift of currently €100 for the first semester and €70 for each following semester for the duration of your studies (maximum 10 semesters). You only have to register Eberswalde as your principal residence. Simply ask in the city hall for the application form.

Welcome Money

Local Registration Office »Bürgeramt Eberswalde«
buergeramt@eberswalde.de

Mandatory license fee for public broadcasting service

Once you are registered in Germany, you will be obliged to pay for a TV and radio license (Rundfunkbeitrag). The contribution serves to finance public broadcasting service based on a contributory model. Contributory means that in principle all adult citizens, companies and institutions as well as public interest bodies in Germany should make a contribution – regardless of their actual media use. In this way, everyone can benefit from the variety and quality of the freely available public broadcasting services – even those who pay a reduced licence fee or none at all. The fee is paid directly to the public broadcasting service and not to the revenue office, for example. This ensures that the public radio, television and internet services can be produced independently of government influence. You will receive a letter after few months asking you to pay this fee. You should observe this request immediately and not wait for reminders. You can get further information at www.rundfunkbeitrag.de. In case of difficulties, please contact the Welcome Centre at the Student Support Service Department (welcome@hnee.de).

IT Service Centre (Department of Central IT)

The Department of Central IT ensures a stable and secure technical infrastructure and provides essential IT services to support teaching, research, and administration.

Through our online services, you have worldwide access to digital learning materials, your personal data, and emails. Our modern PC labs are available to you 24/7. Additionally, we offer free access to up-to-date Microsoft software for the duration of your studies.

When you enrol, you will automatically receive a university account, giving you access to all central IT services. If you have any questions or technical issues, you can contact us anytime via our ticket system.

For more information, please visit: hnee.de/en/central-it

Department Central IT

City Campus | Building 5 | First Floor
it-support@hnee.de | Phone: +49 3334 657-272

Sustainability with History – Creating the Future with HNEE

The university location of Eberswalde looks back on more than 195 years of commitment to sustainability. Since the founding of the Higher Forestry Academy in 1830, it has stood for responsible teaching and research. Today, the Eberswalde University for Sustainable Development (HNEE) is a modern campus university and a nationally and internationally recognised driving force for sustainable development.

Situated in a unique natural landscape and honoured with multiple awards, HNEE is regarded as a pioneer in putting sustainability into practice. Its range of degree programmes is both consistent and diverse – and firmly oriented towards the future. The university's aim is to actively help shape societal transformation and to equip its students with the key competencies needed for a sustainable future.

HNEE combines strong practical relevance with ample opportunities for co-creation and excellent career prospects. It trains specialists, leaders, researchers and committed changemakers in fields such as nature conservation, forest management, organic agriculture, climate change adaptation, sustainable business, timber construction, and sustainable tourism management.

With around 2,300 students and three locations, HNEE offers a close-knit study environment, short distances, and real-world relevance. The green City Campus is home to the Department of Landscape, Society and Economy and the Graduate School, while the Forest Campus, surrounded by woodland, hosts the Department of Forest, Wood and Environment and the Undergraduate School. A special unit of HNEE is the university's Forest Botanical Garden – one of the oldest of its kind in Europe.



HNEE is a recognised centre for sustainability research and practice, integrating sustainability across teaching, research, operations and campus life. Its EMAS-certified environmental management system was awarded in 2010 and 2017. Sustainable procurement, green event practices and award-winning canteens – developed in close cooperation with students and staff – further reflect HNEE's commitment to environmental responsibility.

Sustainability Management
nachhaltig@hnee.de | Phone: +49 3334 657-403
→ hnee.de/en/sustainable-university

Family Responsibilities and equal Rights at the University



About 2,300 students are enrolled at the HNEE. This means about 2,300 individual situations in terms of family and partnership, health and disabilities, strengths and weaknesses, income and support, mobility and living conditions. Together with the Studierendenwerk Ost:Brandenburg, our university would like to help students find a good balance between studies, work as well as private life.

The Family-Friendly University Coordination Office supports students who take care of children and/or family members in addition to their studies. The cooperation with Eberswalde childminders and daycare centres of the city of Eberswalde ensures easier access to childcare. In addition to individual counselling, information events and family celebrations, the service also includes two well-equipped parent-child rooms with nappy-changing, play and rest

facilities as well as additional nappy-changing places in various WC anterooms. A parents' workstation has been set up in the library and play corners in both canteens ensure a relaxed lunch.

Studying is very challenging for the students. Through individual learning coaching, students can (re)discover their own learning style, develop learning strategies and consolidate and strengthen learning techniques.

Motivation, self-management and social skills are also a topic. In difficult study and life situations, psychological counselling helps with orientation and decision-making. Every two weeks, the Studentenwerk offers psychological counselling or learning coaching close to campus. Registration is done through the Studierendenwerk Ost:Brandenburg.

Our university is committed to tolerance, diversity and democracy. Despite the diversity of the university members, every person should be able to study and work at the university successfully and with pleasure. The team of our Equal Opportunities Officer is committed to this.

An overview of the counselling services on social issues and contact persons for questions on the topic of anti-discrimination and diversity can also be found at
→ hnee.de/counselling

Psychological Counselling or Learning Coaching
→ studierendenwerk-ostbrandenburg.de/en/beratung/service@swobb.de | Phone: +49 335 56509-90

Equal Opportunities Officer
Julia Pöller and Nadine Herold
gleichstellung@hnee.de

Family Friendly University
Vera Clauder
familie@hnee.de | → hnee.de/en/family | Phone: +49 3334 657-143

Libraries



Do you need books for your studies? Then don't rush out and buy them all. The university library has a lot to offer. In the library on the City Campus, you will find literature and information on all specialist areas as well as reading zones, internet workplaces for database research, carrels for undisturbed study, photocopiers and scanners. The library offers (online) introductions and (online) training, (online) research consultations and online tutorials on its services on YouTube. Information is available on the website (InfoFit). You can also look through the city library.

University Library (City Campus)
Schicklerstraße 5 | Phone: +49 3334 657-201
→ hnee.de/en/library

Public Library (Bürgerbildungszentrum Amadeu Antonio)
Puschkinstraße 13 | Phone: +49 3334 64420
→ eberswalde.de/start/kultur/bibliothek

Project Laboratories



Project laboratories (»Projektwerkstätten«) are courses offered to Bachelor students from the 2nd semester onwards and Master students from the 1st semester onwards. They are planned and supervised by two student tutors throughout the entire duration. This allows self-organised and independent learning and working on socially relevant projects at peer level. A single examination at the end of the project workshop provides six ECTS credits. Responsible lecturers take over the grading of the examination and support the tutors in case of problems.

Current »Projektwerkstätten« available:
projektwerkstatt@hnee.de | → hnee.de/en/project-laboratories

University Sports Activities

If you've just about had enough for the next few months and want to train not only your mind but also your body, then we highly recommend getting involved in university sports. The association Hochschulsport e. V. has the aim of improving the sports programme at the university and to offer a forum for all those interested in sports. As part of this, city and district sports halls can be rented at a more reasonable rate. In order to participate in university sports, you have to become a member of the association. This costs €10 per semester, but will offer many benefits, including the opportunity to hire one of the six association-owned canoes/kayaks for only €5 per day.

The following sports, among others, are available as part of the university sports programme: windsurfing, capoeira, badminton, basketball, bouldering, rugby, archery, football, table tennis, volleyball, dancing, pilates, aikido, etc. We welcome new ideas and your support: if you would like to offer any other sports or would like other sports to be offered, then get in touch!

Hochschulsport e. V.
thomas.kolling@hnee.de | [→ hnee.de/en/university-sports](https://hnee.de/en/university-sports)

Membership fee per semester: €10



Other sports opportunities in Eberswalde

In addition to university sports, there are many public sports associations and fitness clubs in Eberswalde and the direct surroundings. There you have the chance to get to know the »natives« of Eberswalde and make friends outside the university. Maybe you go in a group of two the first time; the easiest way is to ask your buddy to accompany you. The monthly fees in the associations are usually very low. In addition, it is also worth visiting

»baff« Swimming Pool with Sauna
Heegermühler Str. 69a | [→ baff-bad.de](https://baff-bad.de)

Sustainable Mobility

Greencard and Semester Ticket

With your Eberswalde Green Card your student ID card, you can access the university computer pools at the City Campus outside opening hours, and you can use printers and copy machines. The Greencard is also your semester ticket. This means you can travel climate-friendly on the entire network of the Berlin-Brandenburg public transport association (VBB), i.e. by train, bus, tram, underground.

PLEASE NOTE: Your Greencard must be revalidated each semester. There are machines for this on the City Campus in Building 5, first floor (near the IT Service Centre) and on the Forest Campus in Building 11 (Entrance hall of the Faculty of Forest and Environment). → hnee.de/greencard

If you're planning a trip to the surrounding area or need to transport something extra:

Electric car sharing in the Barnim

→ barshare.de

One vehicle is parked directly at our city campus. The car-sharing project also offers a car for moving helpers with extra loading space.

For those who like cycling

The AStA offers a bicycle self-help station.

Cargo bikes can be rented at various locations in Eberswalde

→ lastenrad-eberswalde.de



Organise and manage your studies with EMMA, Moodle and CampusWorks

On the HNEE website, you'll find direct links to EMMA, Moodle and CampusWorks in the upper right corner under *meine HNEE*.

You may already be familiar with the campus management system EMMA from your online application. In your personalised section (MEIN EMMA), you can view your study plan, up-to-date class schedules, exam dates, and your academic and examination records. You can also download official documents such as your enrolment certificate and academic transcript, and cancel exam registrations at any time and from anywhere. All data is securely stored and accessible only to you.

The learning management system Moodle offers a virtual learning space for each course. Here, you can access and download learning materials, take part in discussions, collaborate on shared documents, and submit assignments or exam papers.

Our platform for communication and collaboration is CampusWorks – the internal intranet of HNEE. It provides students and staff with centralised access to key information, documents and announcements related to studies, teaching and university administration. It serves as a central platform for internal communication, coordination and services.

For first-semester students, registration for elective and optional modules takes place via EMMA during the first week of lectures (Monday to Wednesday).

Support and guidance are available from the respective School Office staff (Study Organisation Officers) or in the EMMA help section on CampusWorks under *Information for Students*.

You can contact our Study Organisation Officers at the Undergraduate and Graduate School via:
rso@hnee.de

System Administration
IT Service Centre
it-support@hnee.de

Language Centre
Christine Noetzel
sprachenzentrum@hnee.de



Career Service & Alumni Network



You're at the beginning but want to know what happens at the end? The earlier you address your own competencies during your studies, the better. Unless you know yourself and your competencies, you won't know what needs to be addressed. We would like to help you with this, right from the start: In individual counselling sessions, we reflect on your personal background together, support you in the overall application process and optimize your application documentation. Our free-of-charge training sessions help to provide optimal preparation for your career entry. You will also receive first-hand information, e.g. on the issue of salary or job searches.

Career Service
career@hnee.de | Phone: +49 3334 657-457 | → hnee.de/en/career

Alumni Network
alumni@hnee.de | Phone: +49 3334 657-585 | → hnee.de/en/alumni

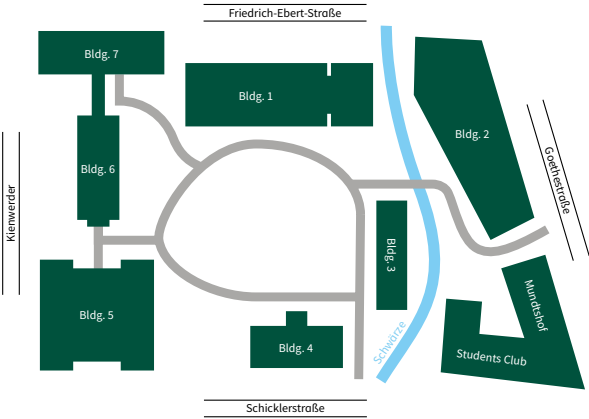
Start-up Centre

From the first idea to founding your own company: the Start-up Centre (Gründungszentrum) at HNEE is your first point of contact for all questions about business start-ups and self-employment. We provide individual counselling services; give information on funding opportunities, support small and large start-ups from idea to implementation. The Start-up Centre provides help free-of-charge and is aimed at students, alumni and scientific staff from all faculties at the University. Take a look through the information material or take part in the free lectures and workshops on a range of start-up topics.

Do you already have a concrete idea? Then Start-up Check is the place for you. In a three-day training session, you will acquire the basic knowledge on starting up a business on the one hand, but you will also examine in detail your ideas together with the coach and other participants on the other. Interested? Then take the first step and come to an orientation chat to the Start-up Centre! In the meeting, you will receive initial feedback on your idea, tips for implementation and suggestions on what to do next. After that, we can provide you with experienced coaches, who will give individual and free-of-charge consultation. You will also receive information on support and funding opportunities. We provide individual and free advice up to the time of your start-up. Use this opportunity and register with us!

Start-up Centre
gruendungszentrum@hnee.de
→ hnee.de/en/start-up-centre

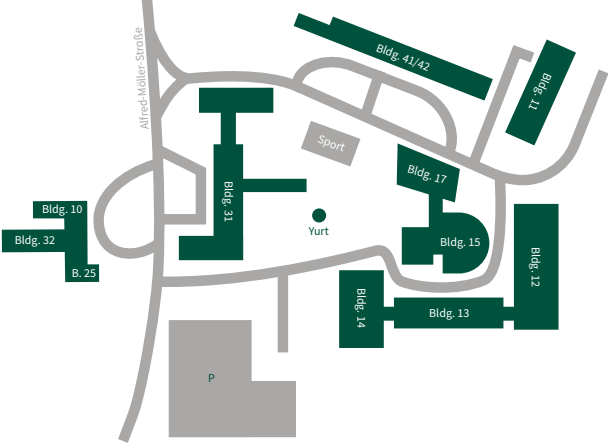
City Campus



Building

No. 1	Graduate School Landscape Ecological Lab
No. 2	Department of Landscape, Society and Economics University Canteen Departments for Personnel, Budget and Procurement as well as Facility and Environment Management
No. 3	Post Office Language Centre
No. 4	Old Forestry Academy Students' Union (AStA)
No. 5	New Forestry Academy Chancellor Students' Service Exchange Office Central IT Department Parent-Child-Room PC-Pools
No. 6	University Management University Communication Sustainability Officer Assembly Hall
No. 7	University Library
Mundshof	Offices for employees in research projects

Forest Campus



Building

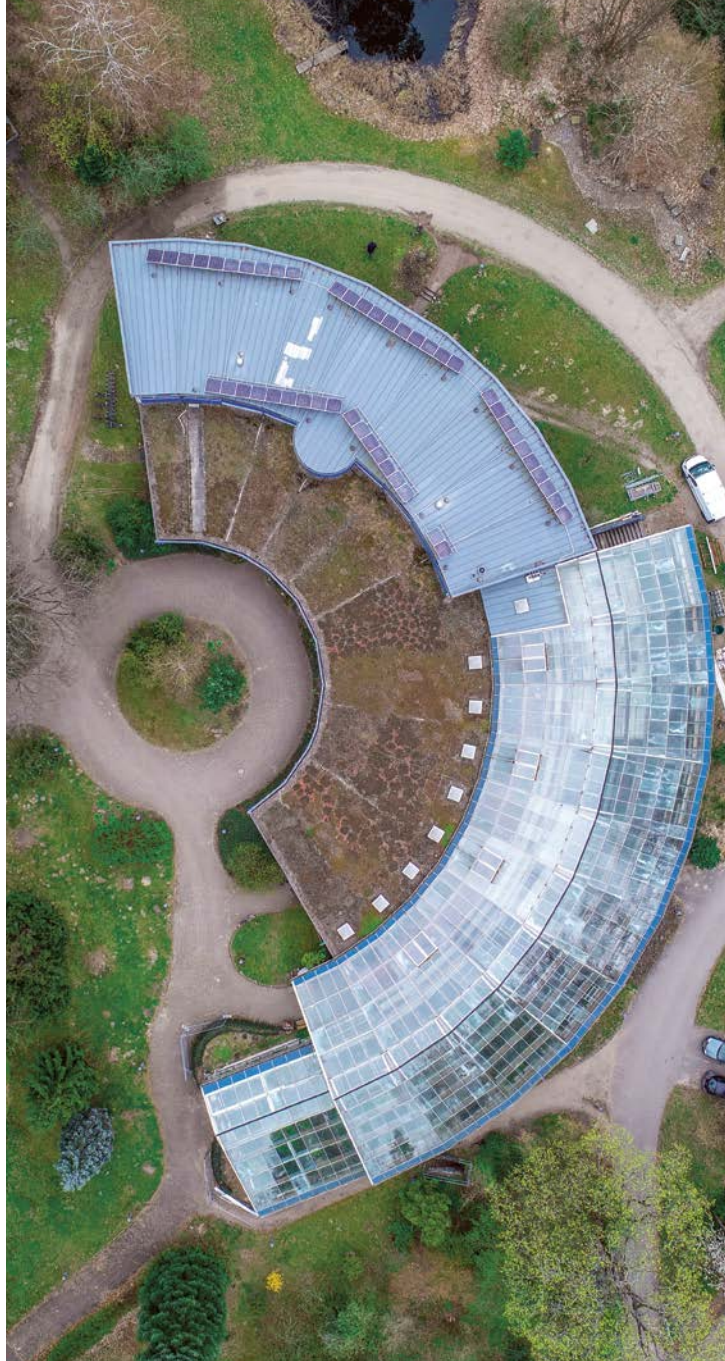
No. 10	Start-up Centre Further Training Centre
No. 11	Undergraduate School Department of Forest, Wood and Environment IT Service Centre
No. 12	Office of the Department of Forest, Wood and Environment Technical Centre
No. 13	Material Testing Institute (Materialprüfanstalt Eberswalde) Parent-Child-Room
No. 14	Woodworking Studio
No. 15	Wilhelm-Pfeil-Auditorium
No. 17	University Canteen Childcare Centre
No. 25	Career Service InnoSupport Research Foundation Transfer
No. 31	Federal States' Centre of Competence for Forestry Issues (Landeskompetenzzentrum Forst Eberswalde)
No. 32	Central Ecological Lab
No. 41/42	Thünen Institute of Forest Ecosystems
Sport	Sport and Leisure Centre
Yurt	Silent Space

Forest Botanical Garden

As one of Europe's oldest, it offers insights into domestic and foreign woods and plants in a very descriptive way. There is also a root cellar, an arboretum and changing exhibitions. There is a very special magic at the Forest Botanical Garden during summer, when music and voices sound across the warm night air of the gardens. Then it is PurPur time for concerts, presentations and films by national and international artists! If you need to relax after an exhausting day of lectures, or just want to go for a stroll, this is definitely the right place! Forests are important! With this guiding motto, the city of Eberswalde and the HNEE have initiated the foundation WaldWelten together. The focus of the foundations' activities is on the areas of forest research, environmental education, nature conservation and cultural promotion.

Forstbotanischer Garten Eberswalde
Am Zainhammer 5 | Phone: +49 3334 657-476
→ hnee.de/en/fbg

Forest of the World Foundation »Stiftung WaldWelten«
info@waldwelten.de
→ waldwelten.de/en/welcome



2

SCHOLARSHIPS FOR INTERNATIONAL STUDENTS
TIPS FOR SMART SPENDERS
JOBS FOR STUDENTS

FINANCE

Scholarships for International Students

International students can apply for scholarships at numerous institutions. The extensive DAAD scholarship database for foreign students, graduates and academics offers a range of scholarships and additional information to help them with their application.

→ daad.de/en

Our university grants the Deutschlandstipendium (Germany Scholarship). This scholarship programme supports academically excellent enrolled students with €300 per month for a period of two semesters until max. the end of the standard period of study. It will not cover your living costs but could be a good financial support during your studies.

For further information and application deadlines please visit:

→ hnee.de/en/student-financing

The “Studienstarthilfe” provided by the Studierendenwerk Ost:Brandenburg is a special funding programme within the framework of BAföG. It is aimed at first-semester students receiving social welfare benefits who are under the age of 25 at the start of their studies and have enrolled at a university for the first time in Germany, an EU member state, or Switzerland.

For further information please visit:

→ studierendenwerk-ostbrandenburg.de/studienstarthilfe

Tips for smart Spenders

Some Eberswalde companies give discounts on presentation of the student card. Here is a small selection of companies that have already offered this in previous years. But it is also worth asking other companies and shops about discounts for students. Here is a small selection of companies that have already offered this in previous years. But it is also worth asking other companies and businesses about discounts for students.

- Eberswalde City Library
- Pizza-Point Eberswalde
- »baff« Leisure Pool
- Globus Naturkost
- Regional Shop Krumme Gurke
- Grill & Frank Copy and Print Service
- Fit & Fun Sports Centre
- Eberswalde Zoo
- Events of the Eberswalde Cultural Programme
- Some Bars & Pubs

Students can also take advantage of other offers that help to relieve the financial pressure, for example:

Eberswalde Tafel

→ brotundhoffnung.de/tafel

Food Sharing Eberswalde

→ hnee.de/en/student-initiatives

Exchange, lending and gift shop

→ fairleihladen.de

Eberswalde swap and give away group via telegram

Working during your Studies

For many students in Germany, having a part-time job is a normal part of student life. For international students, it can also be an important way to support yourself financially. If you come from a non-EU or non-EEA country, please note that there are legal limits on how much you are allowed to work during your studies. In most cases, having some knowledge of German will greatly increase your chances of finding a suitable job.

For more information please visit:

→ internationale-studierende.de/en/during-your-studies/jobbing

Both our campuses (Building 2, City Campus and Building 11, Forest Campus) offer a notice board for advertising internships, part-time and seasonal jobs. Our career service also provides a jobportal, displaying current job and internship ads. There are also plenty online portals, where you can search for part- and full time jobs nationwide in Germany.

The Career Service Team is happy to support you in your search for student jobs and internships and regularly sends out job offers to students. You can also take advantage of the student employment and social counselling service!

A tip for you: Your chances at finding a job will increase significantly if you can speak German.

Most of the offers can be found here:

Career Service

→ hnee.de/en/career

Job offers from partner institutions

→ hnee.de/en/partnerjobs

Student Employment and Social Counselling

studiberatung@hnee.de



3

STUDENTS' UNION
OUR UNIVERSITY MANAGEMENT AND THE
MOST IMPORTANT COMMITTEES
SCHMATZKAMMER
STUDENT CLUB
ALNUS

FOODSHARING
HORIZONTE E.V.
NATURFREUNDE EBERSWALDE E.V.
STUDENTS FOR FUTURE AG BARNIM
CAMPUSGARTEN
GELA EBERSWALDE – GEMEINSAM LANDWIRTSCHAFTEN

STUDENT COMMITMENTS

Students' Union

The Students' Union (AStA) is a body of the so-called constituted student body, to which all students automatically belong. Its purpose is to represent student interests externally, i.e. vis-à-vis the University and outside, e.g. in regional politics. Every year, you can elect the members of the Students' Union and of course stand for election yourselves. The Students' Union represents the interests of the student body in a number of ways. It takes a position on university policy issues and works together with the other university councils. In addition, it promotes political education and the social, ecological, music and sports-related interest of students. If you would like to introduce student initiatives and projects and require help to do so, you can submit an application for support at AStA. The applications are discussed in public meetings that take place every two weeks during semester time. There is financial support as well as logistic support available. You can find more details on the website of the Union or on EMMA. In order to fulfil its tasks, AStA establishes the student body budget. All students pay a proportional contribution for the activities of the AStA via the semester fee. The members of AStA work in so-called units, in which they carry out a range of tasks, e.g. finances, social issues, university policy and much more. In addition, there are working groups, in which non-members can also participate actively. Once per semester, AStA organizes the Student General Meeting (SVV). This is the highest committee of the student body and constitutes a quorum when at least ten percent of students are present. If you would like to discover more about AStA, its members and its tasks, or if you would like to become active yourself in order to improve the university, then you can find information on our website, or just write us an e-mail and/or attend one of the AStA meetings.

Facts

Members: up to 15

Term of Office: 2 semesters

Elections in January.

Activities

Cooperation with University management and the University councils for the improvement of study conditions | cooperation with the AStAs at other Brandenburg universities and joint interest representation vis-à-vis the Ministry of Research, Science and Culture | Support of faculties | Financial and technical support of student initiatives | Carrying out the Student General Meeting | Organization of the Campus party.

Service

Party equipment rental (lighting, music, beer benches, projectors, pavilions, BBQ) | Semester ticket and semester ticket exemption | signatures for hardship loan applications to the Studentenwerk Frankfurt (Oder) | University sports | Administration of the dog kennels | Welcome of newborns.

Students' Union

Office: City Campus | Building 4 | Top Floor

asta@hnee.de | [→ hnee.de/en/asta](https://hnee.de/en/asta)

Student Vice-President

The student vice-president is the representative of the student body's interests in the university management. Since 1999, the HNEE has been giving students a special opportunity to actively contribute to shaping university life. The AStA suggests a suitable candidate, who is then nominated by the university management. Why should this not be an international student in the future?

Student Vice-President

svp@hnee.de

Our University Management and the most important Committees

President

The president leads the university and is responsible for its strategic, academic, and administrative direction. Supported by the Presidential Board in an advisory role, the president ensures the institution fulfils its mission in teaching, research, and knowledge transfer.

Chancellor

The chancellor oversees the university's administration and is a member of the Presidential Board. They are responsible for managing the budget, human resources, facilities, student services, and IT infrastructure.

Presidential Board

The Presidential Board advises and supports the President in decision-making. It includes the President, Vice-Presidents, Deans, the Chancellor, the Equal Opportunities Officer, and one student Vice-President.

Senate

The Senate supervises the President's fulfillment of duties, adopts new university statutes, and decides on appointments of professors and new degree programmes. Its members include two students, among others.

Student Committee (AStA)

Proposes a student vice-president | Decides what happens with the AStA contributions | Organises events | Networks in university politics etc.

Schools

At HNEE, two Schools – one located on the City Campus and one on the Forest Campus – serve as central contact points for all matters related to your studies. They ensure

that your academic life runs smoothly, from timetabling to exam coordination. The Undergraduate School is based on the Forest Campus, while the Graduate School is located on the City Campus.

Departments

HNEE is organised into two departments – one located on the City Campus and one on the Forest Campus. These departments serve as the core organisational units for research, teaching and knowledge transfer, taking over the responsibilities previously assigned to individual faculties.

For you as a student, this means: research and teaching are closely integrated, and responsibilities are clearly defined. Each department's leadership team oversees key areas such as staffing, resources, and academic development – actively shaping the university's profile in the process.

Student Council (Fachgruppenrat)

All HNEE students are automatically members of a subject group linked to their degree programme. Each group elects a student council (Fachgruppenrat) that represents interests, organises events and excursions, and acts as a link between students, lecturers, and university bodies. Councils meet regularly and receive funding from the AStA, which they manage independently.

There are the following student councils at HNEE:

Sustainable Economy | fgr-nawi@hnee.de

Sustainable Land Use | fgr-nala@hnee.de

Wood Engineering | fgr-hoing@hnee.de

Forestry and Environment | fgr-wum@hnee.de

Schmatzkammer

An open space for exchange, creative work and cultural events. A kitchen for All with rescued food and a Fair Café will be held here regularly. You can find out more via our Telegram group:

→ t.me/+J43QrdIwZPM0ZDli

Schmatzkammer

Coppiestr. 3 | 16227 Eberswalde | mail@schmatzkammer.org

→ schmatzkammer.org

Student Club

Over 20 years ago, the Studentenclub Eberswalde e.V. was initiated by students with the aim of enriching student life, and has been operated by a committed group of students, Eberswalde residents and working people. At the Studi, you can unwind at the end of the day at the bar, enjoy lengthy game evenings, get on stage with improvisation theatre, experience bands with a range of music styles, play table football matches, listen to readings, meet up and chat with others in your initiatives, or compete with your team in our monthly pub quiz. Four times a week, we host a bar evening, which is spiced up with a little extra, such as drink specials or particular music genres on the respective evening. The Studentenclub Eberswalde is organized as a self-supporting association, which offers its members the opportunity to become involved in a variety of ways. Different groups plan events and concerts, or coordinate advertising and public relations. This also includes aspects such as purchasing, and the maintenance of the club. In addition, there are the shifts on days on which the club is open. We are always looking for committed and active club members! The Club offers the space and opportunity to organize your own events, such as concerts, readings, film screenings, slide shows, tournaments and much more. All according to the motto: Right in the middle of it all, not at the sidelines! How to become a member? Just come by to the club and get some information.

Student Club

Schicklerstraße 1 | studiclub@hnee.de

→ facebook.com/studentenclub.ew

ALNUS

The Arbeitsgemeinschaft für Landschaftspflege, Naturschutz, Umweltbildung und Stadtökologie (Working Group for Landscaping, Nature Conservation and City Ecology), for short ALNUS e. V., views itself as a practical platform, in which you can apply the knowledge acquired during studies, or try things out under instruction. In the ALNUS groups, you can do the following, among other things: communal gardening, bring children and young people closer to nature, press juice from windfall fruit for the community. New ideas and members are always welcome.

ALNUS e. V.
alnus@hnee.de | → alnus@hnee.de

Foodsharing

A student initiative at HNEE has joined the nationwide Foodsharing movement, actively working to combat food waste. The group rescues food that would otherwise be thrown away and cooperates with various businesses in Eberswalde to do so.

A publicly accessible fridge – known as a FAIRteiler – has been set up in the canteen building on the city campus. All residents of Eberswalde are welcome to use the fridge: either to take food when needed or to leave items they no longer require.

Foodsharing
foodsharing-eberswalde@hnee.de

Horizonte e. V.

Horizonte – Expanding Perspectives

Horizonte stands for perspectives and boundaries – and there are many of them. The aim of the university association is to broaden these horizons: by offering views into different realities of life, cultures and histories. HORIZONTE promotes intercultural understanding and encourages respectful, tolerant interaction.

Geography Live – Intercultural Learning in the Classroom

For many years, Geography Live has been bringing international perspectives directly into local schools. In cooperation with educational institutions, association members – especially international students – lead interactive lessons in which they present their home countries. Pupils learn about different cultures, countries and ways of life in an engaging, authentic and hands-on way.

Bike Rental – Getting around Eberswalde

To support international students and guest lecturers in their everyday lives in Eberswalde, Horizonte lends out fully functional second-hand bicycles for a small deposit. In doing so, we promote sustainable mobility – easy, practical and community-minded.

Horizonte e. V.
Alfred-Möller-Str. 1 | 16225 Eberswalde | 03334 657-167

Chairperson:
Diana Cerviño Tirapegui
horizonte@hnee.de

Dr. Astrid Schilling
astrid.schilling@hnee.de

Naturfreunde Eberswalde e.V.

We Friends of Nature deal with diverse issues and combine different approaches for a better life.

Our topics include environmental education, political commitment, nature conservation, diversity and tolerance. So far, two working groups have formed within our association: The AK Politische Aktion (Political Action Working Group) has the aim of causing a stir and making people stop and think by means of diverse creative activities. The AK Umweltbildung (Environmental Education Working Group) aims to entice primary school children in Eberswalde to discover, explore and understand the world on their doorstep together. Group life doesn't come up short, either with activities such as hiking tours, parties at the campfire, or cooking together, we celebrate coming together as such and always look forward to old and new faces!

Naturfreunde Eberswalde e.V.
naturfreunde@hnee.de
Facebook: NaturFreundeEberswalde

Students for Future AG Barnim



Sustainability and sustainable development are basic principles of academic education at HNEE. We learned at the university that we could work democratically to preserve the basis of life. The climate crisis is a real threat to human civilisation – overcoming the climate crisis is, in our view, the main task of the 21st century. We demand a policy that does justice to this task. We are students of the HNEE and we would like to promote the basic idea of sustainable development in the district of Barnim. We would like to give other students the opportunity to join us.

Students for Future AG Barnim
f4f@hnee.de

Campusgarten

Inspired by concepts of Urban Gardening, several small plots developed in spring 2014, which rapidly expanded to the Forest and City Campuses and led to the founding of our initiative. In this regard, we are active in the areas of plot and plant rotation, compost and seeds, mushroom cultivation and bee hotels, tree and shrub conservation, greenhouses and pizza oven construction at the Forest Campus. Our vision ranges from colourful wild herb meadows to log-block plots and pumpkin hoops. We are an open group and are pleased to welcome new members, as well as new ideas and support.

Campusgarten
campusgarten@hnee.de

GELA Eberswalde – Gemeinsam landwirtschaften

Regional, seasonal, consistent, bio-dynamic, direct and self-organized: that means, independent of commerce and the food industry. We are a mutual support community for vegetables and dairy products. With the motto »Sharing the Harvest«, we aim at a social form of farming, the CSA principle (Community Supported Agriculture). If you've always wanted to have fresh tasty vegetables from the region and season, then join in and get your share of the harvest. The vegetables and raw milk products come from local farms. Deliveries are made every Wednesday. The delivery and distribution location is at City Campus.

GELA Eberswalde
gela.eberswalde@hnee.de



EBERSWALDE AND SURROUNDINGS

4

THE FOREST TOWN
ON YOUR BIKE – TOURS OF THE
SURROUNDING AREA
ONE OF THE TEN FINEST ZOOS IN GERMANY
SHORTEST ROUTE TO LAKE

FURTHER LEISURE OPPORTUNITIES
WHEN YOUR STOMACH IS GROWLING ...
WHAT ELSE?
A SELECTION OF IMPORTANT ADDRESSES

The Forest Town

As the name suggests, the district town with over 43,000 inhabitants is situated between extensive woodlands in Brandenburg. Eberswalde is special – not only because of its beautiful natural landscape with its numerous lakes, but also because of the many cultural highlights that contribute to a high quality of life.

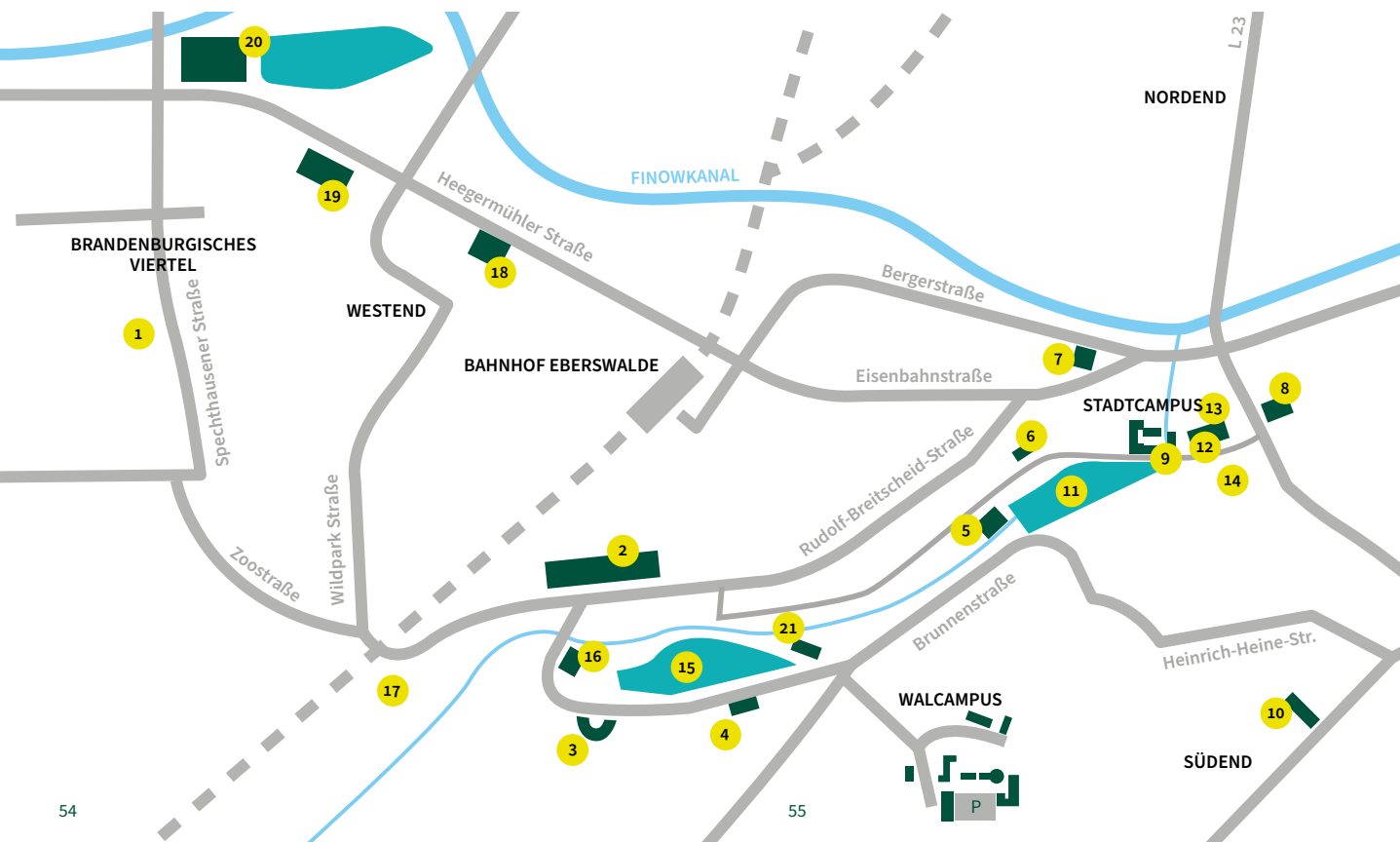
- 1 Dormitory Beeskower and Strausberger Straße
- 2 Hospital
- 3 Functional Building Forest Botanical Garden
- 4 Dormitory Schwappachweg
- 5 House Schwärzetal
- 6 Public Library
- 7 Post Office
- 8 Municipality (in the town hall)
- 9 Student Club
- 10 Dormitory Bernauer Heerstraße

Attractions

- 11 City Park (Ammonpark)
- 12 Paul-Wunderlich-Haus
- 13 Eberswalde Museum
- 14 Maria-Magdalenen-Kirche
- 15 Forest Botanical Garden
- 16 Zainhammer Mühle
- 17 Zoo
- 18 Cinema »Movie Magic«
- 19 Public Swimming Pool »baff«
- 20 Eberswalde Family Garden
- 21 Sonnenvilla

Webmap

→ hnee.de/webkarten



On your Bike – Tours of the Surrounding Area

Eberswalde · Kloster Chorin · Brodowin · Liepe

The starting point and destination of this approx. 35 km tour is at the town square of Eberswalde. Ride North towards Angermünde – a cycle path begins behind the railway tracks (junction Oderberger Straße), which takes you directly to Chorin (9 km). There, you can visit the Cistercian monastery, which was built in the 13th century. Then roll down the hill on the banks of the Amtsee lake and follow the curve onto the forest path towards Brodowin (6 km). The cobblestone road leads you through a beech grove. After approx. three kilometres, the forest turns into the idyllic cultural landscape of Brodowin. The surroundings of the eco-village »Ökodorf« are perfect for a picnic. From Brodowin, head South towards Liepe (6 km). Through the forest again, past kettle-hole mires and the Liepe forester's lodge. In Liepe, keep to your right and follow the street towards the ship lift. From the old ship lift, there is a great view across the countryside and the construction of the new ship lift. Now follow the road towards Niederfinow and then continue along the Treidelweg alongside the Finow Canal back to Eberswalde (13.5 km).

Rent a bike?

Have you thought about renting a bicycle while you stay here? Well, get in touch with the Students' Union (ASTA) of our university: asta@hnee.de

Flat tyre? Go to ...

RADhaus KattaneK | Eisenbahnstraße 87
→ radhaus-kattaneK.de

Bicycle Self-Help Station

fahrradselbsthilfewerkstatt@hnee.de | Ruhlaer Straße 7

One of the ten finest Zoos in Germany



It can already be glimpsed from the motorway – the Eberswalder Zoo. The zoo, founded in 1958 by Bruno Schulz, has developed into an educational park, which takes pride in environmental education. In the midst of the forest, in expansive and in some cases outdoor enclosures, you can get to know and observe many different species of animals. In addition to the jungle house, lion enclosures, petting zoo and penguin baths, the zoo also has two gastronomical facilities where you can feed your own hunger. The zoo is located at the railway crossing on the route from Forest Campus to the dorm Brandenburgisches Viertel. Admission costs €5 for students (don't forget your Green Card).

Zoological Garden Eberswalde

Am Wasserfall 1 | Phone: +49 3334 22733
→ zoo.eberswalde.de



Shortest Route to Lake

The Schwärzese Lake (approx. 5 km by bike from the student dormitory of the Brandenburgisches Viertel)

Take Zoostraße (south-east exit, Lausitzer Straße, towards Spechthausener Straße at the end) to leave the Brandenburgische Viertel (BV), and follow the road until it takes a sharp left curve (approx. 90°). Go straight ahead into the forest. Continue until the next »large« path crossing (approx. 200 m) and then turn right. Now continue straight ahead, following the path. The route is mostly pretty boring, pine forest after pine forest, with a high-voltage power line running through it. After a few small crossings, curves and small hills you will come to a fork with a barrier, keep to your left and the lake is ahead of you. If you reach the Forsthaus Schwärzese, PLEASE TURN. You have gone too far ... It is always a good idea to take food and drink with you!

Where else to go swimming:

- Parsteiner See | Distance: about 18 km
- Grimmnitzsee | Distance: about 18 km
- Werbellinsee | Distance: about 13 km
- Wesen-See und Brodowiner See | Distance: about 15 km
- Tiefer Bugsin-See | Distance: about 15 km
- Üdersee | Distance: about 12 km

Further Leisure Opportunities

What else has Eberswalde got to offer for your leisure time?

Family Garden

Industrial History, architectural garden art and artful designed Area and a fairytale game landscape with a witch's house on chicken legs, witch's kitchen in the nettle labyrinth, giant spider net.

Am alten Walzwerk 1 | 16227 Eberswalde

Phone: +49 3334 384910

info@familiengarten-eberswalde.de

→ familiengarten-eberswalde.de/en

Cinema »Movie Magic«

Every Tuesday at around 5:45 p.m., selected films are shown for just €4.80 | Selected films are also shown every Monday at around 6 p.m. and Tuesday at 8:15 p.m. for just €6.50.

Heegermühler Straße 25 | 16225 Eberswalde

info@moviemagic-eberswalde.de

Museum in the Adler-Apotheke

City museum with changing special exhibitions, next door you'll find the tourist information for event information.

Steinstraße 3 | 16225 Eberswalde | Phone: +49 3334 64-415

museum@eberswalde.de | → museum-eberswalde.de

Erlebnispark Luftfahrt Finowfurt – Theme Park Aviation

Museumsstraße 1 | 16244 Schorfheide/OT Finowfurt

Tel.: +49 3335 7233 | → luftfahrtmuseum-finowfurt.de

When your stomach is growling ...

... and your throat is dry. Here is a small selection of gastronomic offers near the city centre, in case you are sick of cafeteria food, if your fridge has let you down, or Mum and Dad are on their way, or if you just want to meet up with a few friends.

Clubs, bars & pubs

Studentenclub

Schicklerstraße 1 | next to City Campus

Mundtshof

Schicklerstraße 1 | in the near of student club | cozy and rustic pub with small food offer

Kleinschmidt

Eisenbahnstraße 94 | Café and Bar | chill out in the backyard garden

Exil Jugend- und Kulturverein

Am Bahnhof Eisenspalterei | the alternative Concert- and Partylocation

Cafés, Restaurants & Bistros

Café Gustav

On the town square | one of the nicest places in town

Bäckerei und Café Wiese

across the University Library on the City Campus

Eberswalder Eismanufaktur

Friedrich-Ebert-Straße 9 | delicious organic ice-cream to go

KoBaMugasmus

Schicklerstraße 25 | → kobamugasmus.com

Uckerland Eismanufaktur

Friedrich-Ebert-Straße 9

Café Liesbeth

Ackerstraße 5 | → cafeundantik.de

Eiscafé Venezia

Leibnizstraße 1 | → venezia-eberswalde.de

Kaktus (mexikanisches Restaurant)

Eisenbahnstraße 29

Globus Naturkost

Michaelisstraße 10 | → globus-naturkost.de
Small lunch menu and organic food

Shiva

indische Spezialitäten | Kreuzstraße 1
→ restaurant-eberswalde.de

Wilder Eber

Heegermühler Straße 16 | → wilder-eber.de

Kochkommode

An der Friedensbrücke 23A

What else?

Waldstadtrösterei

Pfeilstraße 25 | Coffee roastery with freshly ground coffee to go

→ waldstadt-roesterei.de

Hoi An – Vietnamese Restaurant

An der Friedensbrücke 23

Restaurant Wilder Eber

Heegermühler Straße 12/16 | rustic, seasonal-domestic food offer, beer garden

→ hotel-egerswalde.de

Café & Restaurant am Weidendamm

Schicklerstraße 4 | Soft ice cream and more

Globus Naturkost

Michaelisstraße 10 | Small lunch menu and organic food

Eberswalde weekly market

Always Tuesday and Friday from 8 a.m. on the market square

Marktschwärmer

Food from small farms in the region

→ marktschwaermer.de

Tante Sören

Rudolf-Breitscheid-Straße 16 | Kiosk, Games, Deco, Art, Coworking

→ tante-soeren.de

A Selection of important Addresses

Call For Help

Emergency Call Rescue Service | Tel.: +49 112

Emergency Call Police | Tel.: +49 110

Medical Care

We all get sick sometimes, and then we need medical assistance. Eberswalde has few doctors, so it might take long to get an appointment. A comprehensive list of local family and specialist doctors can be found online. In case of emergency you might need to go to:

GLG Klinikum Barnim GmbH, Werner Forßmann Krankenhaus

Rudolf-Breitscheid-Straße 100 | Hospital with various specialist departments as well as an emergency center
Phone: +49 3334 69-0

GLG Martin Gropius Krankenhaus

Oderberger Straße 8 | Regional clinic for psychiatric diagnostics and treatment
Phone: +49 3334 53-0

Post Office 485 »Tabacco & More«

Breite Str. 40 (right inside the shopping arcade
Rathauspassage)

Copy Service

grill & frank Digitaldruckerei | Friedrich-Ebert-Straße 27

Re-registration when moving

Local Registration Office | Citizen Services (Bürgeramt
Eberswalde) | Breite Str. 41-44
→ eberswalde.de/en/citizen-service

Mandatory license fee for public broadcasting service (GEZ)

→ rundfunkbeitrag.de

Bike Shops

RAD-Haus Kattaneke | Eisenbahnstraße 87
Phone: +49 3334 212119 | info@radhaus-kattaneke.de

City-Radl D. Bohn | Eberswalder Str. 66
Phone: +49 3334 363811

Fahrrad Fritze | Eberswalder Straße 151
Phone: +49 3334 381620 | mr16225@web.de

Little John Bikes | Schneidemühlenweg 1
Phone: +49 3334 3868226 | ew1@littlejohnbikes.com

More Contact Information

→ hnee.de/en/emergency-help

EVENT DATES AND GUIDE

5

IMPORTANT DATES
EVENTS AT THE FOREST BOTANICAL GARDEN
HERE YOU RECEIVE ASSISTANCE

Important Dates

In September

Enrolment Ceremony

→ hnee.de/en/starting-your-studies

In April & October

Welcome Evening for International Students

For registration and information, please email:
welcome@hnee.de

Once a year in summer or autumn

University meets Business

With inspirational presentations from local entrepreneurs and students

Usually the first Saturday in June

University Information Day at HNEE, Campus Festival and »Waldstadt-Festival«

→ hnee.de/en/hit

→ eberswalde.de/en/waldstadt-festival

Usually one week in October

Provinziale – The Film Festival Eberswalde

The »Provinziale« is presenting awards including the »Stachel« – a special prize for the best examination of sustainability in film form. Since 2017, HNEE has been a cooperation partner of Film Festival Eberswalde.
→ filmfest-eberswalde.de

Usually in June

Intercultural Brunch

For registration and information, please email:
welcome@hnee.de

Usually in November or December

Johannes Schubert Award Ceremony

Since 1996, the Johannes Schubert prize has been awarded for academically excellent work in the field of ecology or meteorology in the context of diplom, bachelor's or master's theses. The award is in honour of Prof. Dr. Johannes Schubert (1859–1947), the former rector of the Forestry University in Eberswalde.

International Christmas Party

For more information, please contact:
welcome@hnee.de

In January

Ökofilmtour (Eco Film Tour)

Festival for Environment and Nature Films. The Ökofilmtour at HNEE is the longest film festival in Brandenburg and shows films on topics such as environmental protection, globalisation or racism. The exclusive environment and nature film seminar including pitch is again being offered to HNEE students.

→ oekofilmtour.de

Enjoy also the numerous cultural highlights in the city, such as the city festival FinE – parallel to the HNEE Open Day, Jazz in E., the garden concerts and every Saturday at 10.30 a.m. »Good morning Eberswalde«.

Events at the Forest Botanical Garden

In May

Day of biodiversity in the greenhouse – family day

In July

Pur Pur – A festival with concerts and films

In December

Forest Christmas on the third Advent weekend

More information on events in the Forest Botanical Garden → hnee.de/en/fbg



Here you receive assistance

Matriculation to exmatriculation (Feedback, exams, re-registration, semester on leave, changing your study course, Transcripts of Records)

Student Support Service Department | City Campus
Building 5 | Room 5.018 | studieren@hnee.de

Cash Office (Problems with semester fee)

City Campus | Building 2 | Room 2.310
haushalt@hnee.de

Funding opportunities for semester abroad or internship abroad

Exchange Office | City Campus | Building 5
exchange-hnee@hnee.de | Phone: +49 3334 657-138

Clogged toilet, ripping tap, uncovered roofs and other problems on the Campus

Department of Environmental and Facility Management
City Campus | Building 2 | Room 2.314
liegenschaftsmanagement@hnee.de

Reservation of university buses

Poststelle | Building 3
poststelle@hnee.de

Ideas for the sustainable University

City Campus | Building 6 | Room 6.307
nachhaltig@hnee.de

Family-friendly University

City Campus | Building 5 | Room 5.014
familie@hnee.de

Welcome Team

City Campus | Building 5
Room 5.011 | welcome@hnee.de

Coordination Anti-Discrimination / Anti-Racism Work

City Campus | Building 6 | Room 06.303
Tel.: +49 3334 657-504

Career Service

Forest Campus | Building 25
Room 25.104 | career@hnee.de

Further counselling services:

→ hnee.de/en/counselling

For support with course registration and cancellation in EMMA, please contact our Officers for Study Organisation at the Undergraduate and Graduate School:

rso@hnee.de

Imprint

Publisher

The President of the Eberswalde University for
Sustainable Development

Editing

In accordance with the German Press Law, the responsible editor is Johanna Köhle

Editorial Deadline

10 July 2025

Layout

anschlaege.de

Contact

Eberswalde University for Sustainable Development
Schicklerstraße 5 | 16225 Eberswalde | Germany
Tel.: +49 3334 657-248
hochschulkommunikation@hnee.de

Picture Credits

P. 6, 7, 58, 59 Malte Wördemann | P. 13, 14, 74, 75 Ulrich Wessollek | P. 16 Susanne Kambor | P. 17 Annika Bischof
P. 19 Kathrin Müller-Rees | P. 21, 37 Florian Reischauer
P. 24, 25 Berit Künzelmann | P. 26 Anne Priebe | P. 31, 57 Patrick Pleul | P. 49 Sarah-Maria Hartmann | P. 51 Wanda von Bremen



**Eberswalde University
for Sustainable
Development**

Follow us:

@hneeberswalde

